



With interchangeable porcelain or Ipe wood tile side panels, Archatrak 'Mixy 60' modular planters offer the option of over 50 colors and styles, plus the ability to extend planters indefinitely by bolting on extension modules. Flat packed for ease of transport, Mixy 60 planters feature frames and decorative end panels of powder coated steel, stainless steel hardware, soil containment sack with drainage outlet, and adjustable height 'feet' to level planters on uneven surfaces. Matching bench seats with porcelain or Ipe wood tile surface can be installed between planter modules and wheels can replace adjustable feet.

**Dimensions:** 24" W x 24" D x 24" H

**Weight w/ porcelain tile side panels:** 189 lbs

**Weight w/ IPE tile side panels:** 164 lbs

**Frame:** 16 gauge powder coated galvanized steel

**Hardware:** Stainless steel

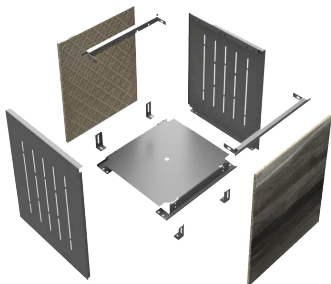
**Packing / Assembly:** Flat pack / Bolt components together

## PORCELAIN PLANTERS MIXY 60

Modular extension option



MIXY 60 components



Self-watering system and drainage

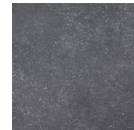


50+ porcelain paver colors & styles

*Modern*



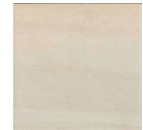
Smoke



Charcoal

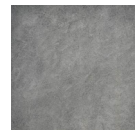


Neram

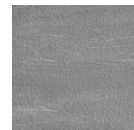


Faro

*Stone*



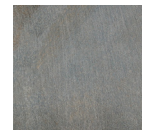
Bluestone



Greystone



Calstone



Alta

*Cement*



Cenere



Sandalo



Zinc

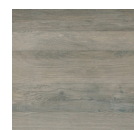


Hyalite

*Wood*



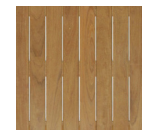
Oak



Nut



Kauri



IPE Wood