



With interchangeable porcelain or Ipe wood tile side panels, Archatrak 'Mixy 45' modular planters offer the option of over 50 colors and styles, plus the ability to extend planters indefinitely by bolting on extension modules. Flat packed for ease of transport, Mixy 45 planters feature frames and decorative end panels of powder coated steel, stainless steel hardware, soil containment sack with drainage outlet, and adjustable height 'feet' to level planters on uneven surfaces. Matching bench seats with porcelain tile surface can be installed between planter modules and wheels can replace adjustable feet.

Dimensions: 24" W x 18" D x 24" H

Weight w/ porcelain tile side panels: 180 lbs

Weight w/ IPE tile side panels: 155 lbs

Frame: 16 gauge powder coated galvanized steel

Hardware: Stainless steel

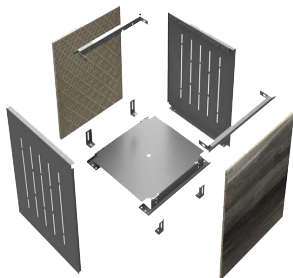
Packing / Assembly: Flat pack / Bolt components together

PORCELAIN PLANTERS MIXY 45

Modular extension option



MIXY 45 components



Self-watering system and drainage

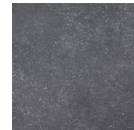


50+ porcelain paver colors & styles

Modern



Smoke



Charcoal

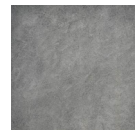


Neram

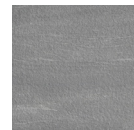


Faro

Stone



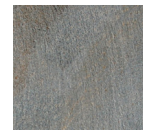
Bluestone



Greystone



Calstone



Alta

Cement



Cenere



Sandalo



Zinc

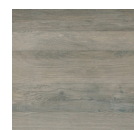


Hyalite

Wood



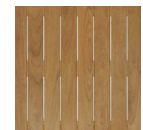
Oak



Nut



Kauri



IPE Wood