



With interchangeable porcelain or Ipe wood tile side panels, Archatrak 'Mixy 30' modular planters offer the option of over 50 colors and styles, plus the ability to extend planters indefinitely by bolting on extension modules. Flat packed for ease of transport, Mixy 30 planters feature frames and decorative end panels of powder coated steel, stainless steel hardware, soil containment sack with drainage outlet, and adjustable height 'feet' to level planters on uneven surfaces. Wheels can replace adjustable feet.

Dimensions: 24" W x 12" D x 24" H

Weight w/ porcelain tile side panels: 173 lbs

Weight w/ IPE tile side panels: 148 lbs

Frame: 16 gauge powder coated galvanized steel

Hardware: Stainless steel

Packing / Assembly: Flat pack / Bolt components together

PORCELAIN PLANTERS MIXY 30

Modular extension option



MIXY 30 components

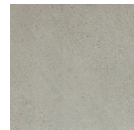


Self-watering system and drainage

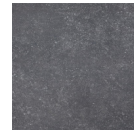


50+ porcelain paver colors & styles

Modern



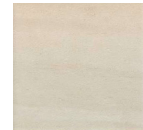
Smoke



Charcoal

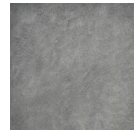


Neram



Faro

Stone



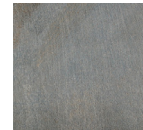
Bluestone



Greystone



Calstone



Alta

Cement



Cenere



Sandolo



Zinc



Hyalite

Wood



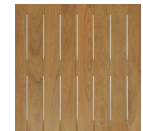
Oak



Nut



Kauri



IPE Wood